



Perspective View

EUROCONTEMPO

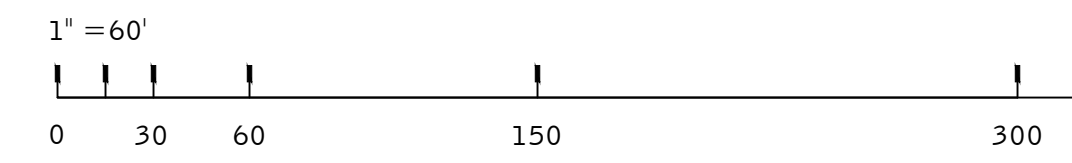
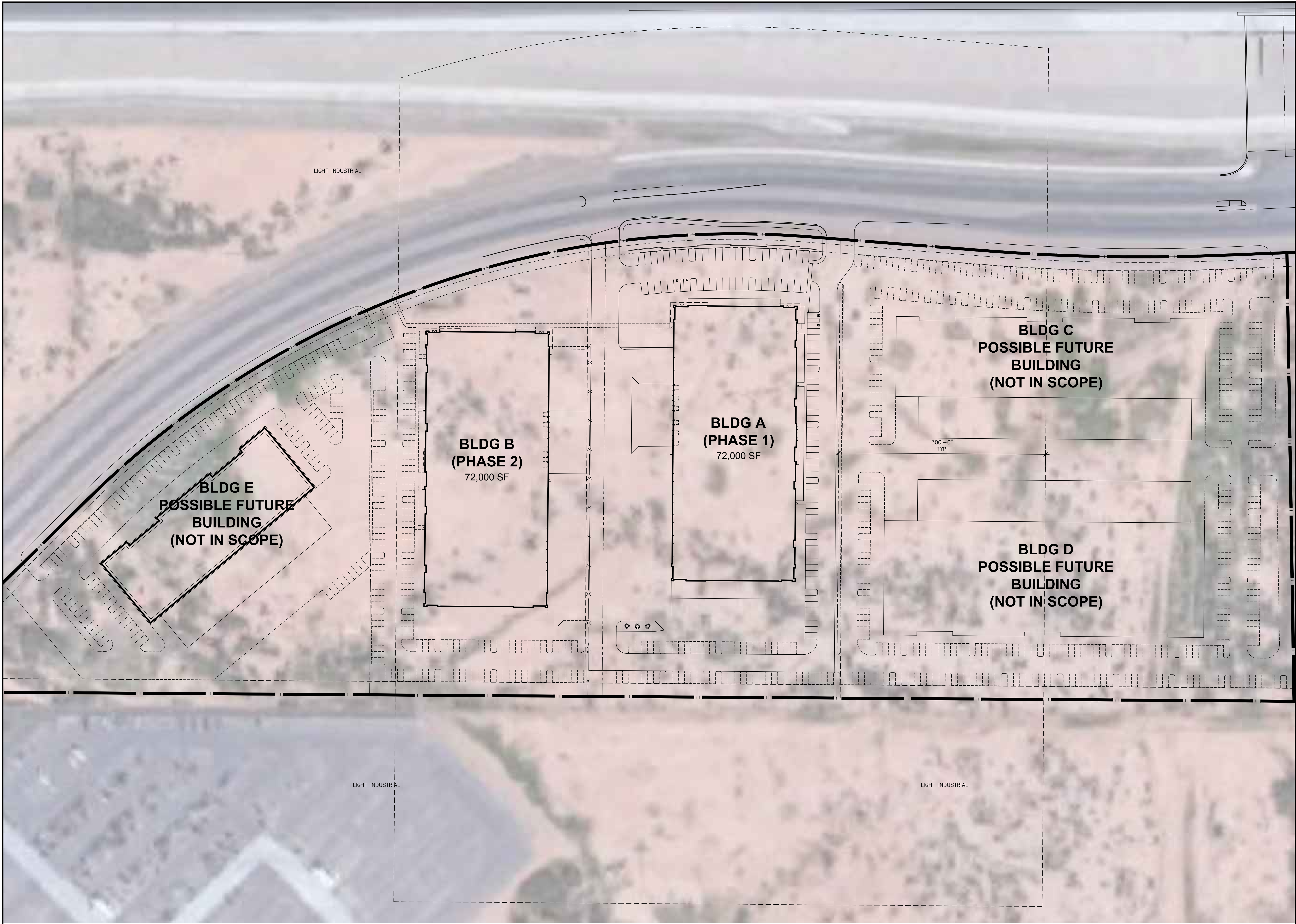
This conceptual design is based upon a preliminary review of entitlement requirements and on unverified and possibly incomplete site and/or building information, and is intended merely to assist in exploring how the project might be developed.

WARE MALCOMB

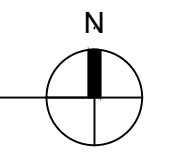
PHX16-0083-00
12.22.2016

SHEET
3

W:\PHX\16\0083\00_Architectural\Cad\DD_PLANNING\0083_A10a.dwg

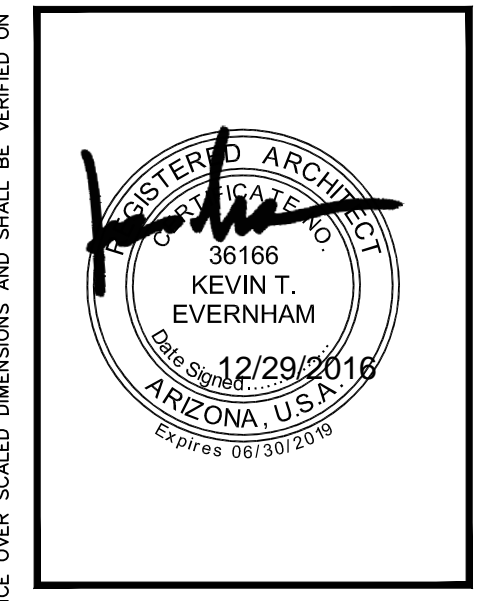


PARCEL CONCEPT PLAN
 SCALE: 1"=60'-0"



WARE MALCOMB
 Leading Design for Commercial Real Estate

architecture
 planning
 interiors
 graphics
 civil engineering
 8181 north via de negresco
 scottsdale, arizona 85258
 P 480.747.0001
 F 480.907.2288



PROJECT
CONTEMPO
 EAST RAY ROAD
 MESA, AZ 85212

PARCEL CONCEPT	
DATE	REMARKS
1-10-2017	DESIGN REVIEW RESUBMITTAL

PA / PM: K. EVERHAM
 DRAWN BY: E. ZITNY
 JOB NO.: PHX16-0083-00

SHEET
A1.0a



-D-



-C-



-B-



-A-

LOCATION A

SCALE: 1/8"=1'-0"

(A)



-D-



-C-



-B-



-A-

LOCATION B

SCALE: 1/8"=1'-0"

(B)



-D-



-C-



-B-



-A-

LOCATION C

SCALE: 1/8"=1'-0"

(C)



-D-



-C-



-B-



-A-

LOCATION D

SCALE: 1/8"=1'-0"

(D)

WARE MALCOMB
Leading Design for Commercial Real Estate

architecture
planning
interiors
graphics
civil engineering
8181 north via de negresco
scottsdale, arizona 85258
P 480.747.0001
F 480.907.2288

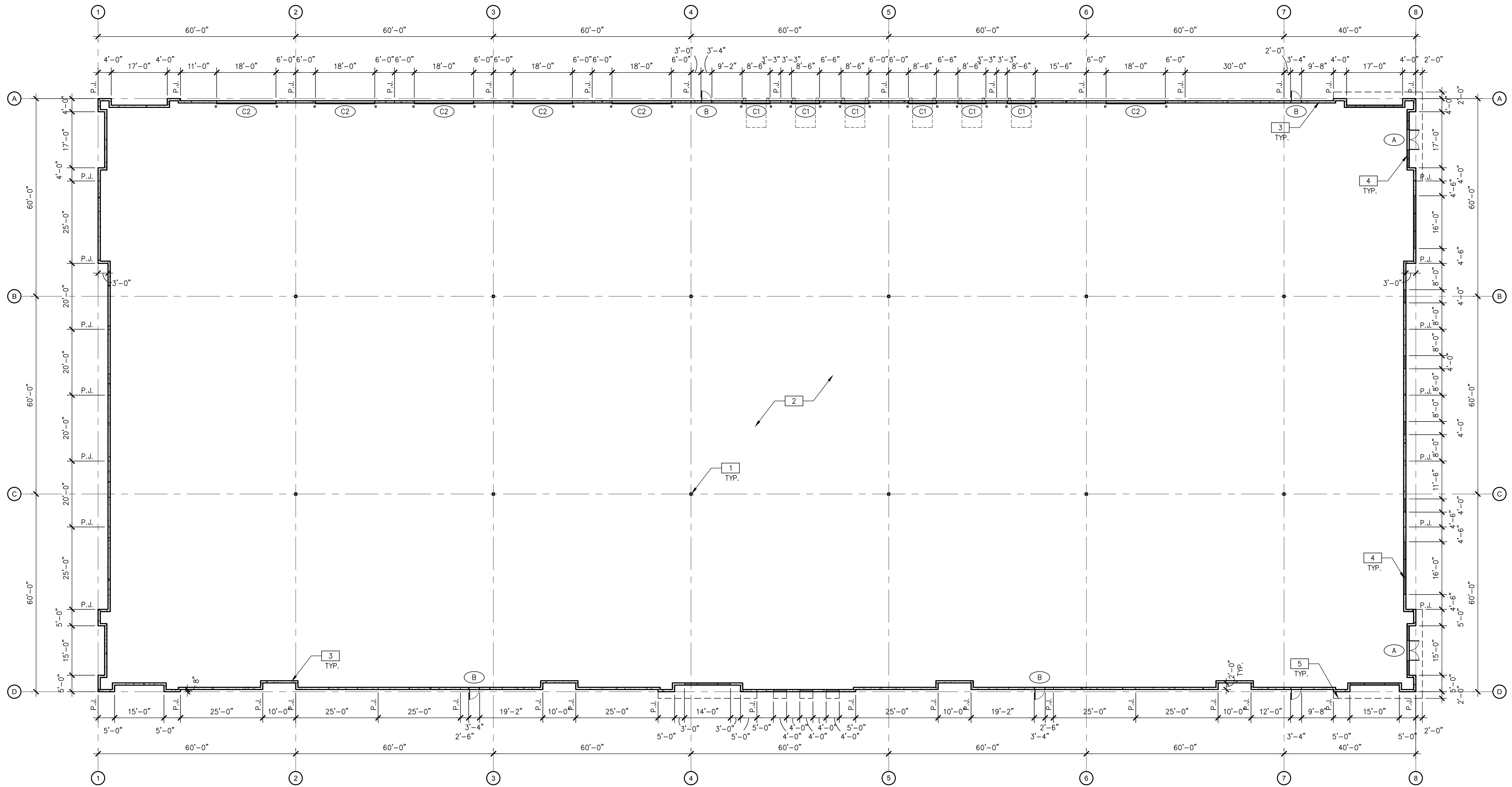


PROJECT
CONTEMPO
EAST RAY ROAD
MESA, AZ 85212

SITE IMAGES	
DATE	REMARKS
1-10-2017	DESIGN REVIEW RESUBMITTAL

PA / PM: K. EVERNHAM
DRAWN BY: E. ZITNY
JOB NO.: PHX16-0083-00

SHEET
A1.1



1/16"=1'-0"
 0 8' 16' 32' 64'
FLOOR PLAN
 SCALE: 1/16"=1'-0"

FLOOR PLAN NOTES

- 1 STRUCTURAL COLUMN.
- 2 CONCRETE SLAB. PROVIDE VAPOR RETARDER OVER SAND BASE AT OFFICE AREA PER SOILS REPORT. PROVIDE SEALER FOR CONCRETE FLOOR AREA IN WAREHOUSE.
- 3 EXTERIOR CONCRETE TILT PANEL WALL, PAINTED
- 4 ALUMINUM STOREFRONT SYSTEM WITH 1" THICK INSULATED GLASS.
- 5 METAL CANOPY ABOVE, SEE ELEVATIONS

DOOR TYPES

(A) ALUMINUM STOREFRONT (PAIR)

3'-0" X 8'-0" CLEAR ANOD. ALUM. STOREFRONT DOOR W/TEMPERED GLAZING (NARROW STILE)

FRAME: MANUF
 HARDWARE:
 2 SETS PIVOT SET
 2 SETS INTER PIVOT
 1 EA EXIT DEVICE
 1 EA MORTISE CYLINDER
 2 SETS OFFSET PULL
 1 EA OH CLOSER
 1 EA THRESHOLD
 1 EA DECAL

NOTE: WEATHERSEAL BY DOOR MANUFACTURER

(B) HOLLOW METAL

3'-0" X 7'-0" PAINTED INSULATED HOLLOW METAL DOOR

FRAME: PAINTED HOLLOW METAL
 HARDWARE:
 3 EA HINGES
 1 EA EXIT DEVICE
 1 EA CYLINDER
 1 EA CLOSER
 1 EA PERIMETER SEAL
 1 EA BOTTOM DRIP
 1 EA THRESHOLD
 1 EA LOCK GUARD
 1 EA HVY DTY FLOOR STOP

(C) SECTIONAL O.H. DOOR

(C1) 8'-6" W X 10' H DOCK HIGH SECTIONAL VERTICAL LIFT OVERHEAD DOOR W/ FACTORY PAINTED FINISH.

(C2) 18' W X 20' H SECTIONAL VERTICAL LIFT OVERHEAD DOOR W/ FACTORY PAINTED FINISH.

HARDWARE:
 1 EA SLIDE BOLT
 1 EA PAD LOCK

WALL LEGEND



DOOR NOTES

BUTT HINGES:
 SOSS = STANDARD WEIGHT, PLAIN BEARING, STEEL HINGES OR APPROVED EQUAL.
 ALL EXTERIOR OUTSWING DOOR BUTTS SHALL BE MADE OF NON-FERROUS MATERIAL AND SHALL HAVE STAINLESS STEEL HINGE PINS.

YON DUPRIN 99 SERIES PANIC DEVICE OR APPROVED EQUAL.
CLOSING DEVICES: NORTON 8500 BF SERIES OR APPROVED EQUAL.
STOPS: TRIMCO W1200 SERIES DOOR STOP
SLIDE BOLT AND PAD LOCK: INSTALL SILDE BOLT ABOVE LEVEL OF DOOR GUARD

WARE MALCOMB
 Leading Design for Commercial Real Estate

architecture
 planning
 interiors
 graphics
 civil engineering
 8181 north via de negresco
 scottsdale, arizona 85258
 PHX 947-7401
 F 480-947-2288

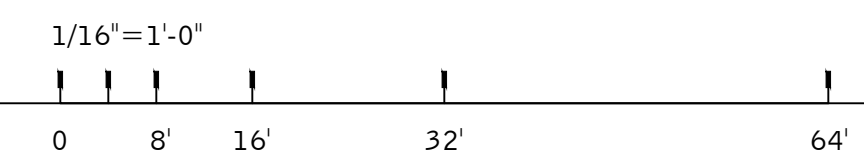
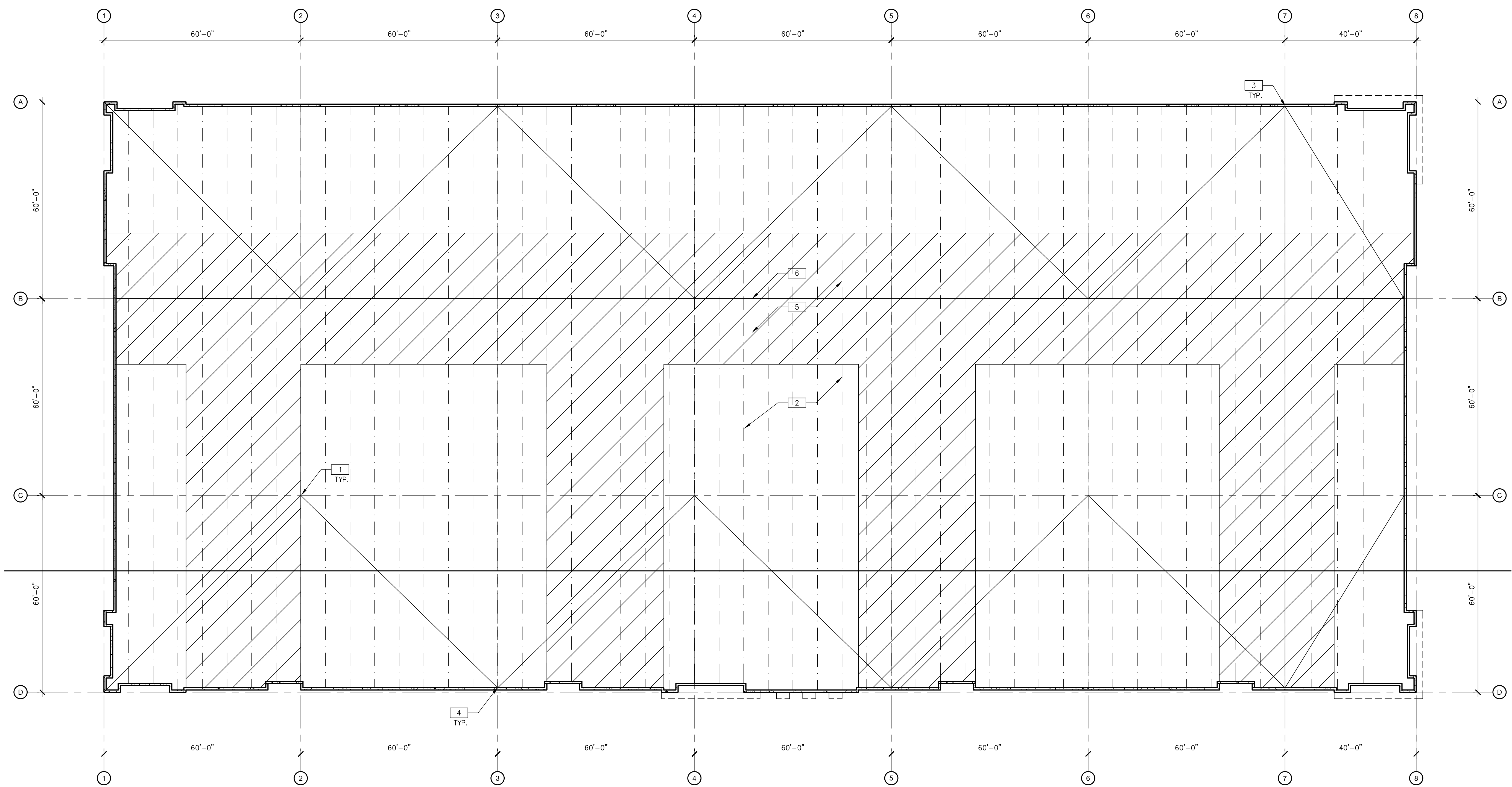


PROJECT
CONTEMPO
 EAST RAY ROAD
 MESA, AZ 85212

FLOOR PLAN	
DATE	REMARKS
1-10-2017	DESIGN REVIEW RESUBMITAL

PA / PM: K. EVERNHAM
 DRAWN BY: E. ZITNY
 JOB NO.: PHX16-0083-00

SHEET
A2.1



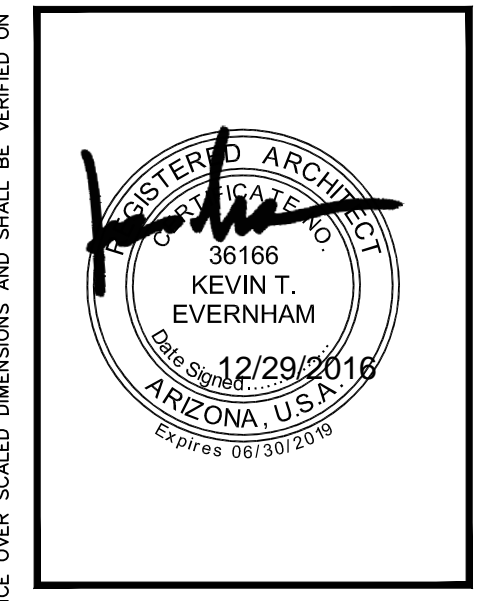
ROOF PLAN
SCALE: 1/16"=1'-0"

- FLOOR PLAN NOTES**
- 1 STRUCTURAL COLUMN BELOW ROOF DECK.
 - 2 STRUCTURAL ROOF JOIST BELOW ROOF DECK
 - 3 LOCATION OF ROOF DRAIN
 - 4 ROOF SLOPED 1/4" MIN. TO DRAIN
 - 5 HATCHED AREA INDICATES MECHANICAL FREE ZONE TO MAINTAIN SCREENING REQUIREMENTS
 - 6 ROOF RIDGE LINE

- WALL LEGEND**
- CONCRETE WALL

WARE MALCOMB
Leading Design for Commercial Real Estate

architecture
planning
interiors
graphics
civil engineering
8181 north via de negresco
scottsdale, arizona 85258
P 480.747.0001
F 480.907.2288

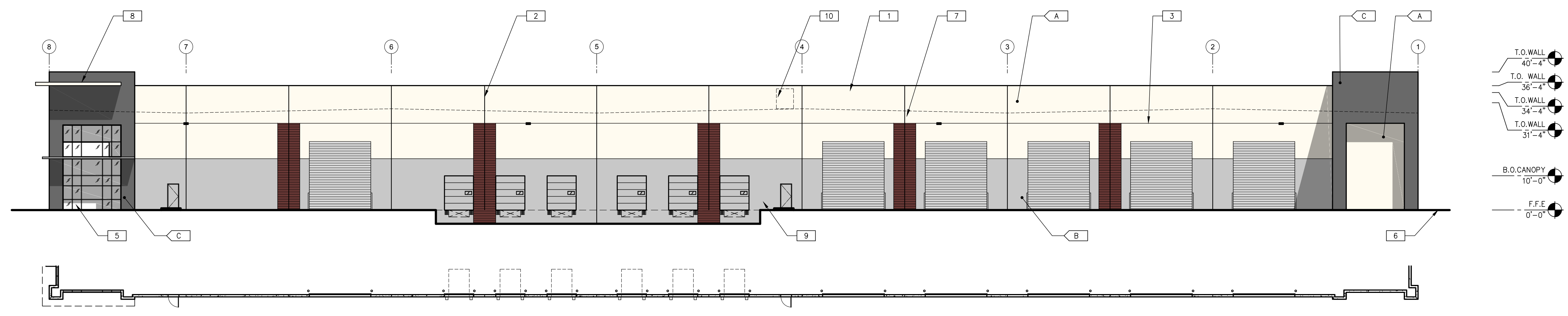


PROJECT
CONTEMPO
EAST RAY ROAD
MESA, AZ 85212

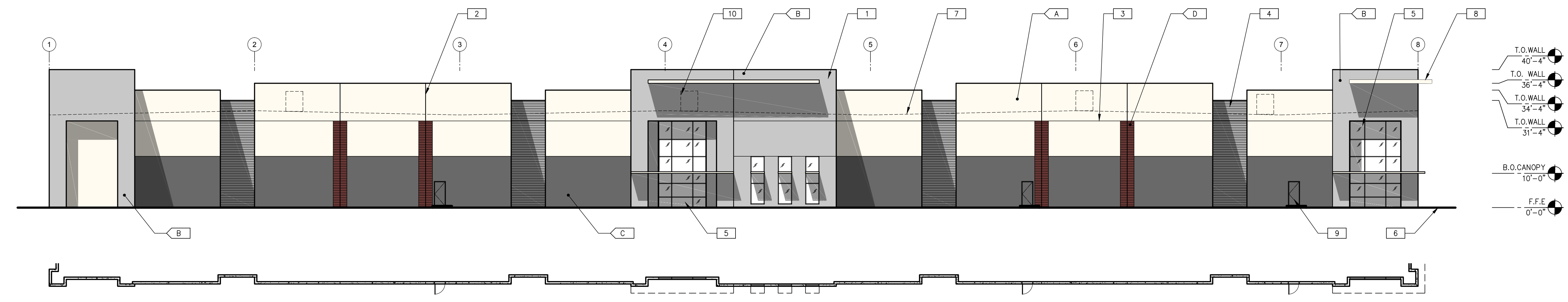
ROOF PLAN	
DATE	REMARKS
1-10-2017	DESIGN REVIEW RESUBMITTAL

PA / PM: K. EVERNHAM
DRAWN BY: E. ZITNY
JOB NO.: PHX16-0083-00

SHEET
A3.1



WEST EXTERIOR PLAN & ELEVATION
SCALE: 1/8"=1'-0" (A)



EAST EXTERIOR PLAN & ELEVATION
SCALE: 1/8"=1'-0" (B)

LEGEND



ALL GLASS USED ON THE ENVELOPE OF THE BUILDING TO BE:
PPG CARIBIA
U FACTOR = 0.28 AND SHGC = 0.30

COLOR LEGEND

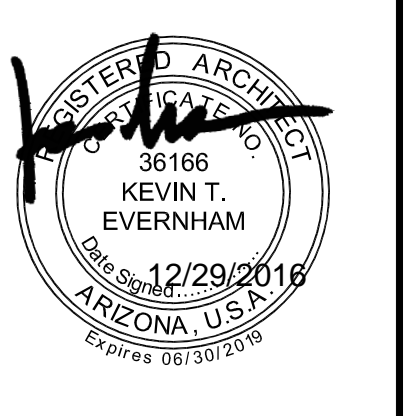
- (A) BASE COLOR: VAPOR - DE6358
- (B) SECONDARY COLOR: BABY SEAL - DE6361
- (C) SECONDARY COLOR: STORM CLOUD - DE6362
- (D) ACCENT COLOR: FORESTWOOD - SW7730

ELEVATION NOTES

- 1 CONCRETE WALL, PAINTED.
- 2 CONCRETE WALL JOINT.
- 3 3/4" V-REVEAL.
- 4 RECESSED FORMLINER PANEL, SEE PLAN
- 5 ALUMINUM STOREFRONT SYSTEM WITH 1" THICK INSULATED GLASS.
- 6 FINISH GRADE, VARIES.
- 7 LINE OF ROOF BEYOND.
- 8 METAL CANOPY - PAINTED.
- 9 METAL MAN DOOR, PAINTED
- 10 OUTLINE OF MECHANICAL UNIT BEYOND

WARE MALCOMB
Leading Design for Commercial Real Estate

architecture
planning
interiors
graphics
civil engineering
8181 north vln de negro
scottsdale, arizona 85258
P 480.767.1701
F 480.907.2286

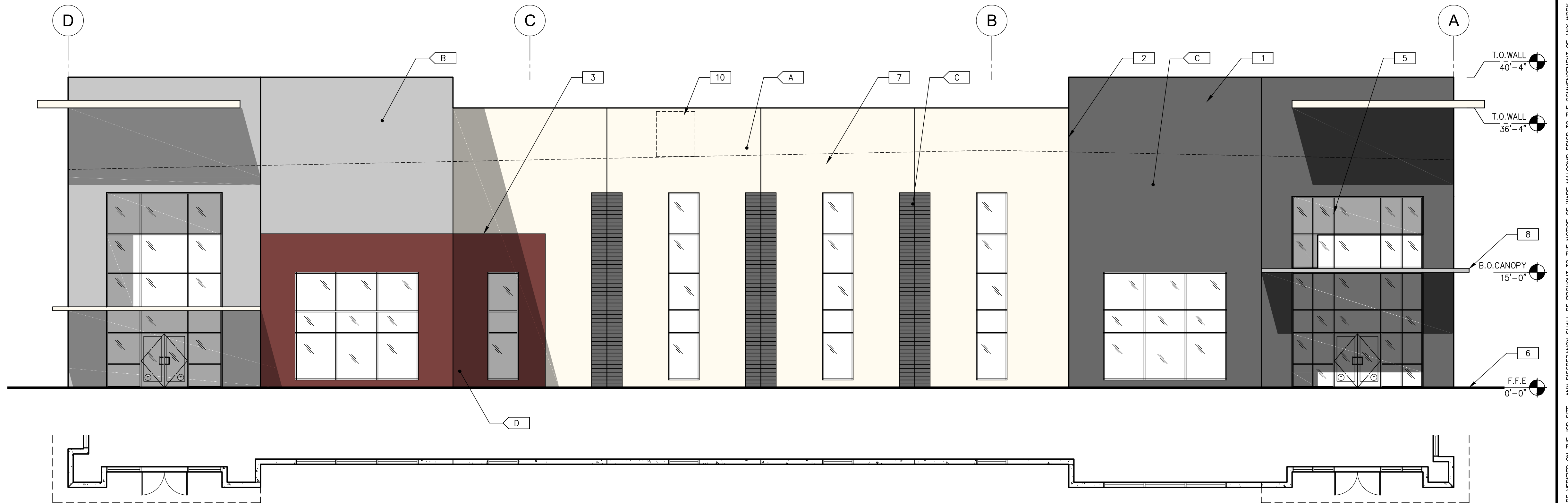


PROJECT
CONTEMPO
EAST RAY ROAD
MESA, AZ 85212

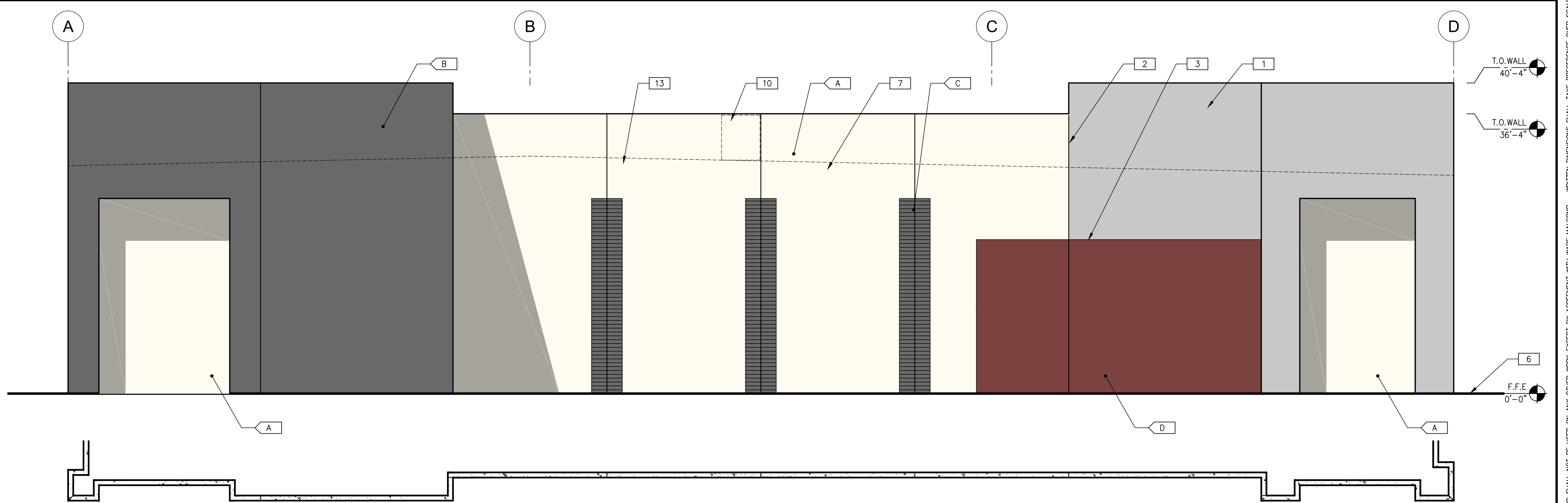
EXTERIOR ELEVATIONS	
DATE	REMARKS
1.10.2017	DESIGN REVIEW RESUBMITTAL

PA / PM: K. EVERNHAM
DRAWN BY: E. ZITNY
JOB NO.: PHX16-0083-00

SHEET
A4.1



NORTH EXTERIOR PLAN & ELEVATION
SCALE: 1/8"=1'-0" **A**



SOUTH EXTERIOR PLAN & ELEVATION
SCALE: 1/8"=1'-0" **B**

LEGEND

VISION GLASS

ALL GLASS USED ON THE ENVELOPE OF THE BUILDING TO BE:
PPG CARIBIA
U FACTOR = 0.28 AND SHGC = 0.30

COLOR LEGEND

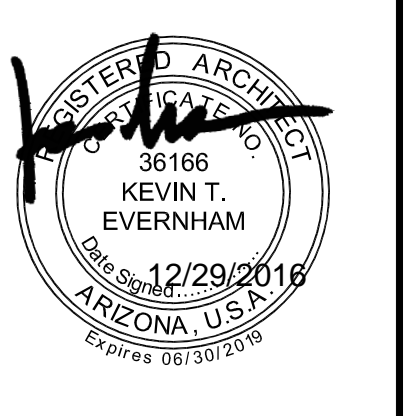
- A** BASE COLOR: VAPOR - DE6358
- B** SECONDARY COLOR: BABY SEAL - DE6361
- C** SECONDARY COLOR: STORM CLOUD - DE6362
- D** ACCENT COLOR: CRABBY APPLE - SW7592

ELEVATION NOTES

- 1** CONCRETE WALL, PAINTED.
- 2** CONCRETE WALL JOINT.
- 3** 3/4" V-REVEAL.
- 4** RECESSED FORMLINER PANEL, SEE PLAN
- 5** ALUMINUM STOREFRONT SYSTEM WITH 1" THICK INSULATED GLASS.
- 6** FINISH GRADE, VARIES.
- 7** LINE OF ROOF BEYOND.
- 8** METAL CANOPY - PAINTED.
- 9** METAL MAN DOOR, PAINTED
- 10** OUTLINE OF MECHANICAL UNIT BEYOND

WARE MALCOMB
Leading Design for Commercial Real Estate

architecture
planning
interiors
graphics
civil engineering
8181 north vin de negro
scottsdale, arizona 85258
P 480.767.7701
F 480.907.2288

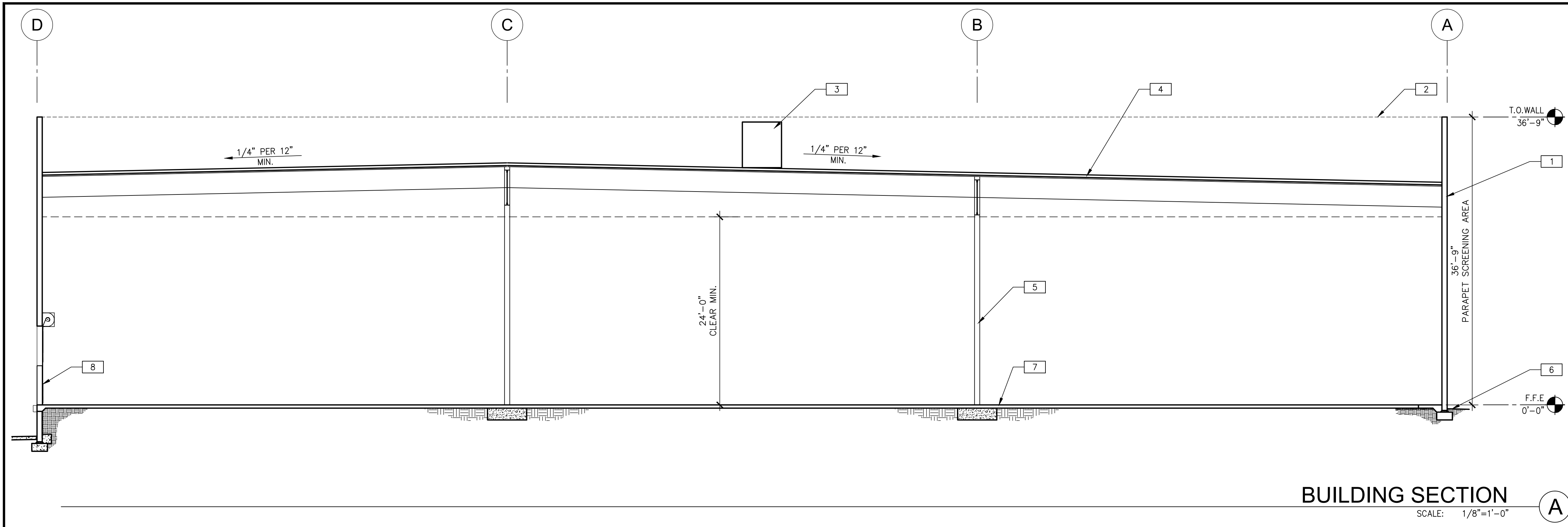


PROJECT
CONTEMPO
EAST RAY ROAD
MESA, AZ 85212

EXTERIOR ELEVATIONS	
DATE	REMARKS
1.10.2017	DESIGN REVIEW RESUBMITTAL

PA / PM: K. EVERNHAM
DRAWN BY: E. ZITNY
JOB NO.: PHX16-0083-00

SHEET
A4.2



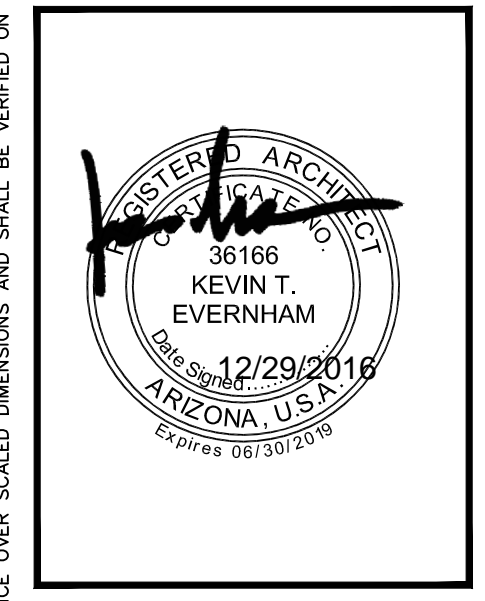
BUILDING SECTION
SCALE: 1/8"=1'-0" **A**

SECTION NOTES

- 1 CONCRETE WALL, PAINTED.
- 2 MINIMUM PARAPET BEYOND
- 3 FULLY SCREENED MECHANICAL UNIT
- 4 ROOF SYSTEM OVER STRUCTURAL STEEL DECK AND JOISTS
- 5 STEEL COLUMN
- 6 FINISH GRADE, VARIES.
- 7 SLAB ON GRADE
- 8 DOCK HIGH DOOR

WARE MALCOMB
Leading Design for Commercial Real Estate

architecture
planning
interiors
graphics
civil engineering
8181 north via de negresco
scottsdale, arizona 85258
P 480.747.0001
F 480.907.2288



PROJECT
CONTEMPO
EAST RAY ROAD
MESA, AZ 85212

BUILDING SECTIONS	
DATE	REMARKS
1-10-2017	DESIGN REVIEW RESUBMITTAL

PA / PM: K. EVERNHAM
DRAWN BY: E. ZITNY
JOB NO.: PHX16-0083-00

SHEET
A5.1

WARE MALCOMB

Leading Design for Commercial Real Estate

architecture
planning
interiors
graphics
site development

12.08.2016

Wahid Alam
Planning Division
CITY OF MESA
55 North Center Street
Mesa, AZ 85201

RE: Project Narrative

We are pleased to submit the enclosed materials for the Design Review Application Package.

As the site plan and building elevations illustrate, we propose to develop one industrial building, totaling 72,000 SF with a future phase two building mirroring our site to the west to be submitted for approval at a future date. The building will be utilized for light manufacturing and warehouse uses. The site is currently zoned light industrial for this use. Phase 1 of this project, which we are currently submitting to your consideration for review will be completed first with phase 2 (the west property) planned for completion within a two year time frame.

Our proposed concept is consistent with the city of Mesa's development standards and regulations for light industrial development. The design team has been in contact with the Phoenix-Mesa Gateway Airport planner Tony Bianchi to get his input on the building development.

Sincerely,



WARE MALCOMB

Kevin Evernham NCARB AIA
Regional Director

8181 n via de negocio
scottsdale, arizona
85254

p 480.767.1001

f 480.907.2288